

Figure 1. Indications for AVR in Patients With AS

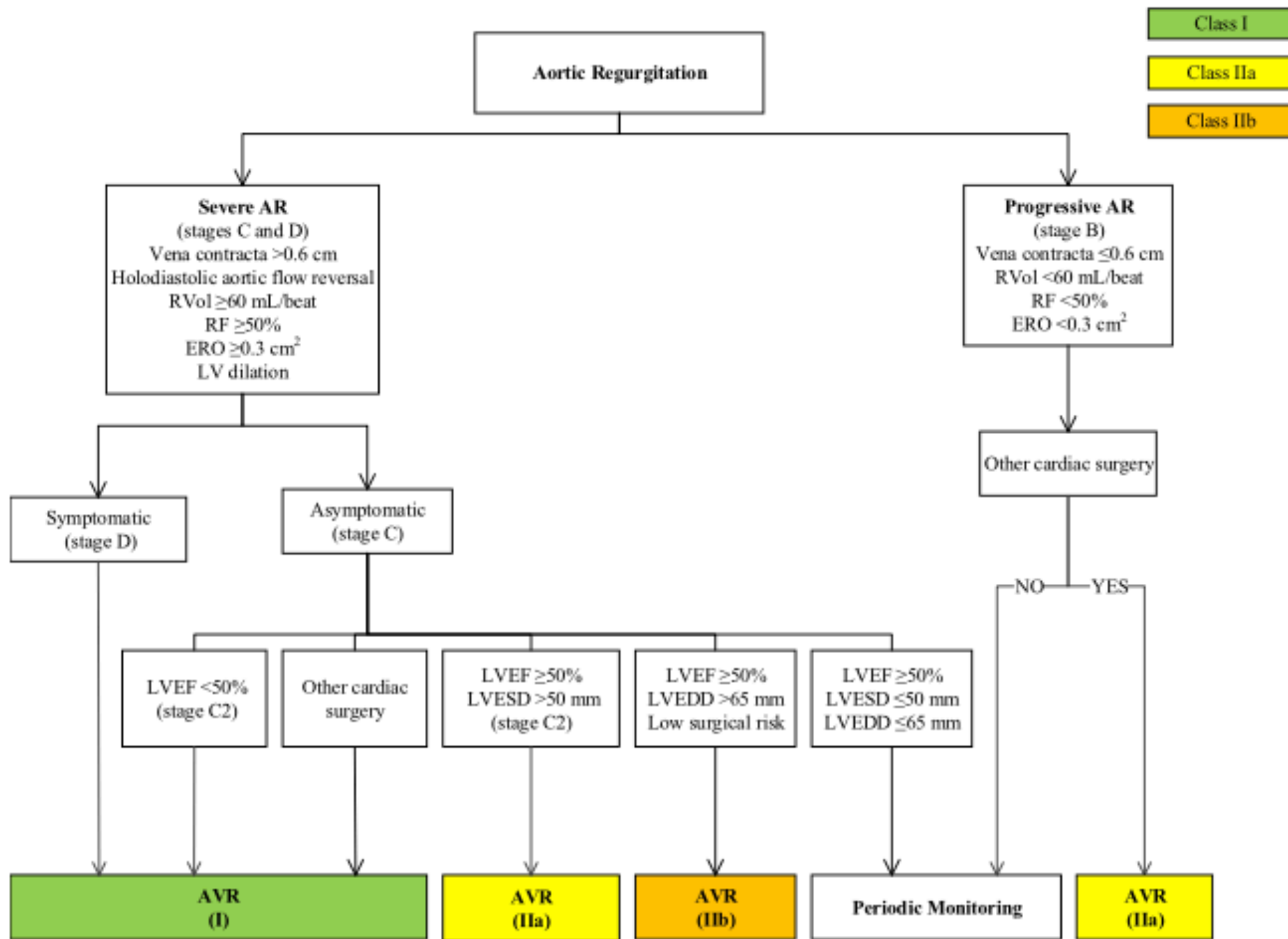
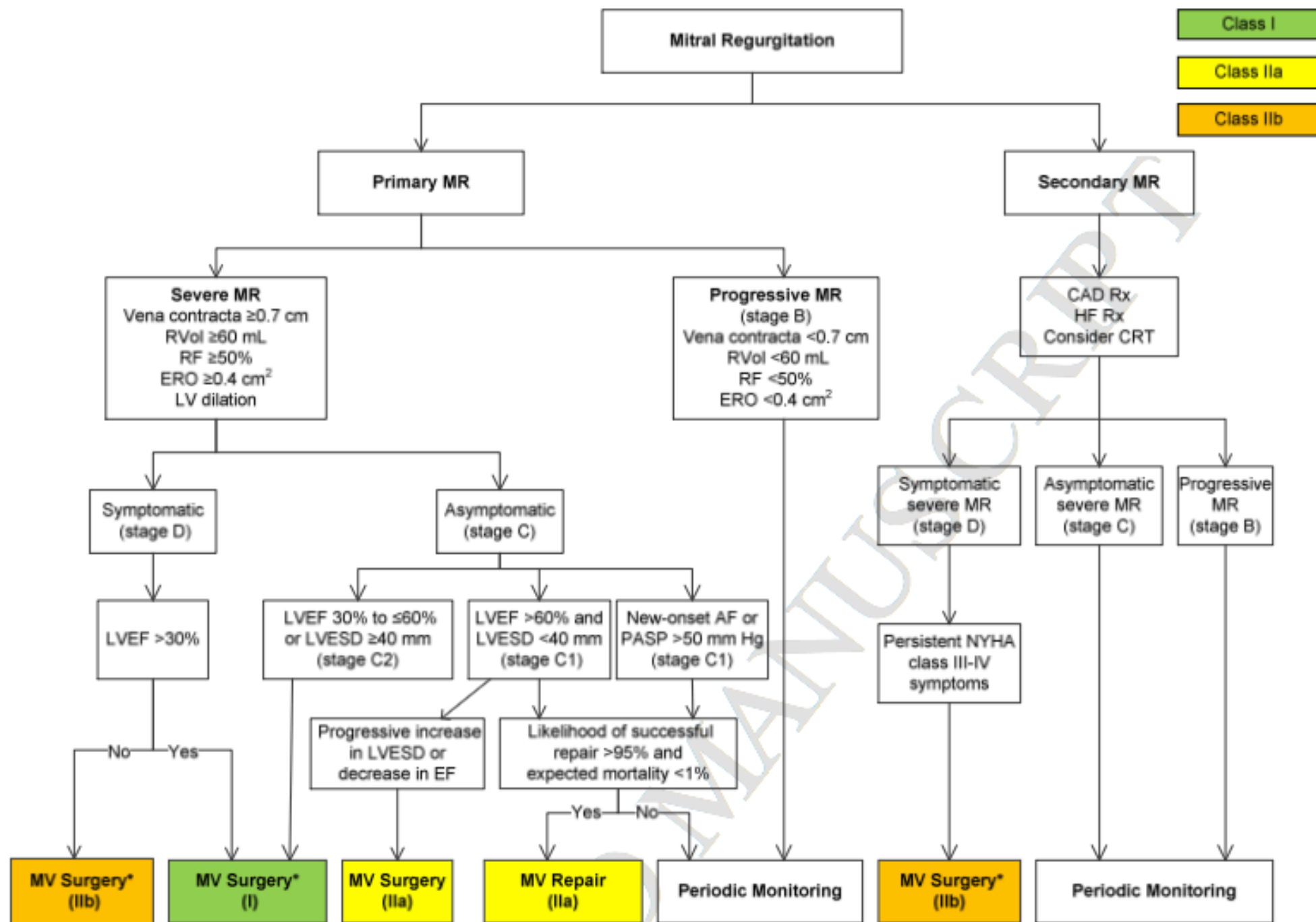


Figure 2. Indications for AVR for Chronic AR

Figure 2. Indications for Surgery for MR (Updated Figure 4 From the 2014 VHD guideline)



*MV repair is preferred over MV replacement when possible.

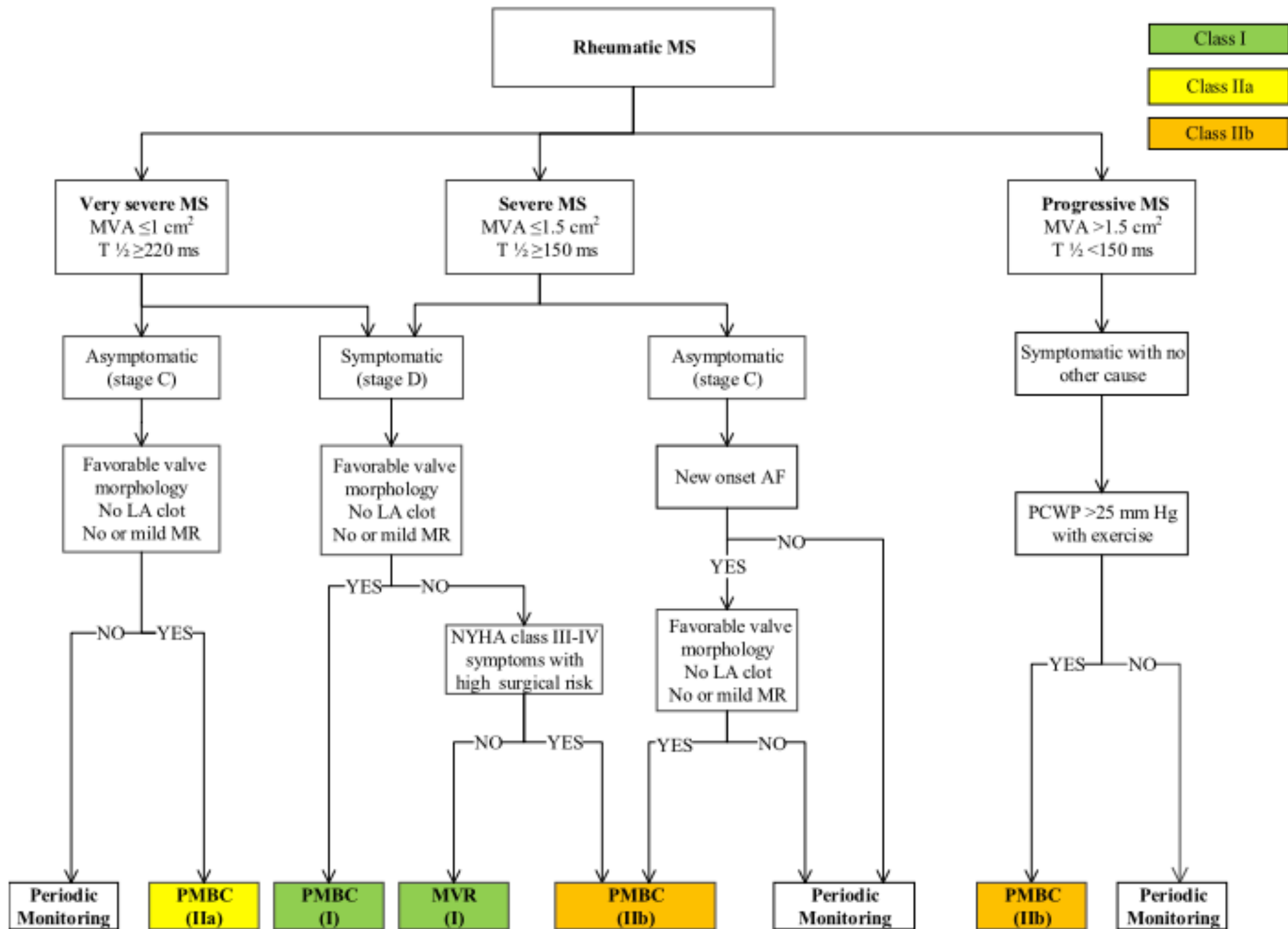


Figure 3. Indications for Intervention for Rheumatic MS

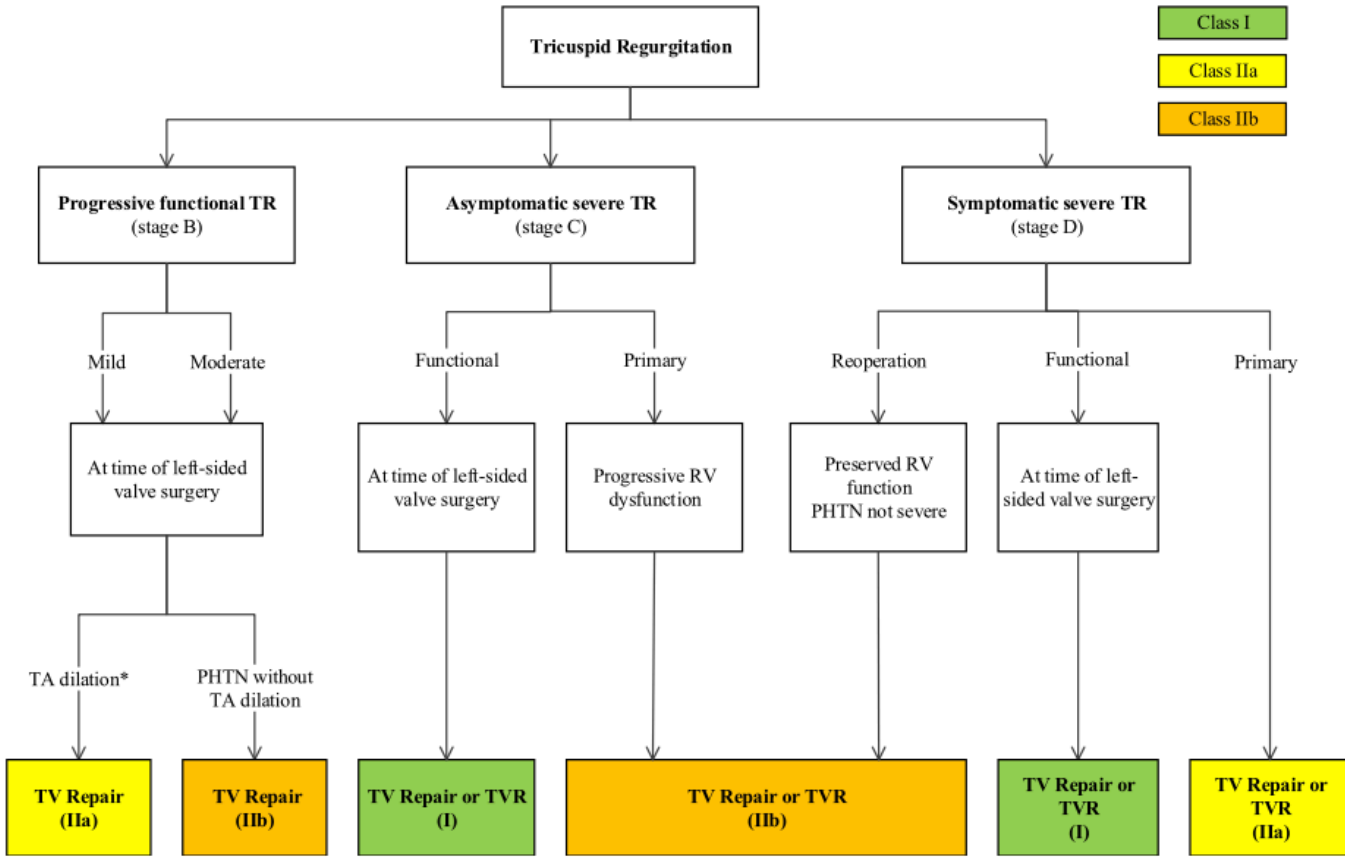


Figure 5. Indications for Surgery